

# Marsh Winds Executive Suites Sullivans Island



**For Lease**

## **Executive Office Suites**

EastRock Properties, LLC, is pleased to present the Marsh Winds Executive Suites located on Sullivans Island. This new construction office complex is designed to provide complete office solutions to small or large business clients. Marsh Winds Executive Suites are well-appointed professional offices that come fully furnished and equipped with secure internet access and telephone systems. Marsh Winds' clients enjoy access to large conference rooms, meeting rooms, kitchen amenities & office equipment such as copier, printer, scanner & fax machines. Marsh Winds features on-site parking, elevator access and a security system all under professional management.



[www.EastRockProperties.com](http://www.EastRockProperties.com)

**For Details Contact:**

Loren Ziff 843-270-6000

[lziff@eastrockproperties.com](mailto:lziff@eastrockproperties.com)

\* Information herein deemed accurate but should be verified \*

# Sullivans Island Marsh Winds Executive Suites



## Digital Floor Plan Rendering



[www.EastRockProperties.com](http://www.EastRockProperties.com)

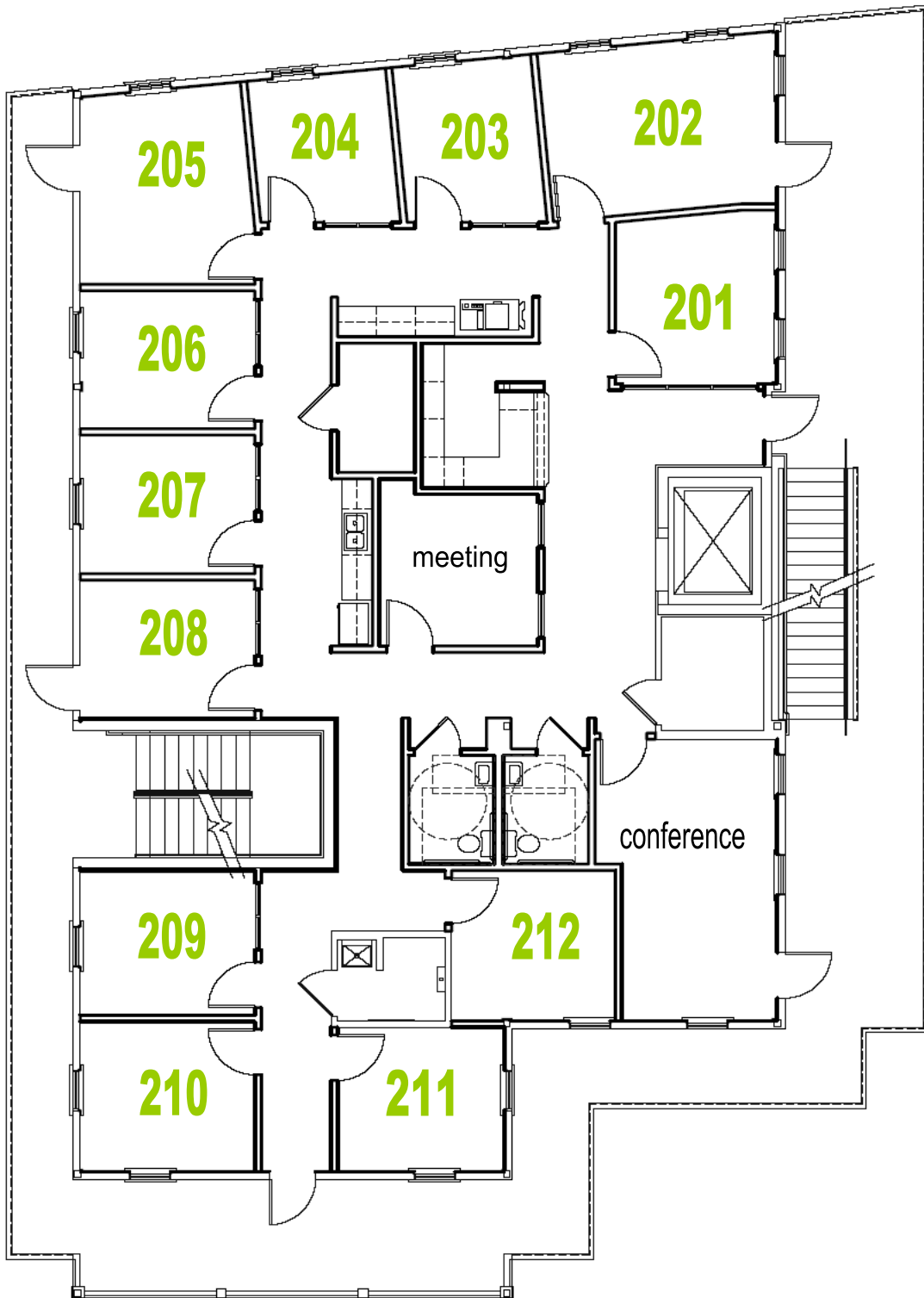
### **For Details Contact:**

Loren Ziff 843-270-6000

[lziff@eastrockproperties.com](mailto:lziff@eastrockproperties.com)

\* Information herein deemed accurate but should be verified \*

# Sullivans Island Marsh Winds Executive Suites



2nd Floor Plan



[www.EastRockProperties.com](http://www.EastRockProperties.com)

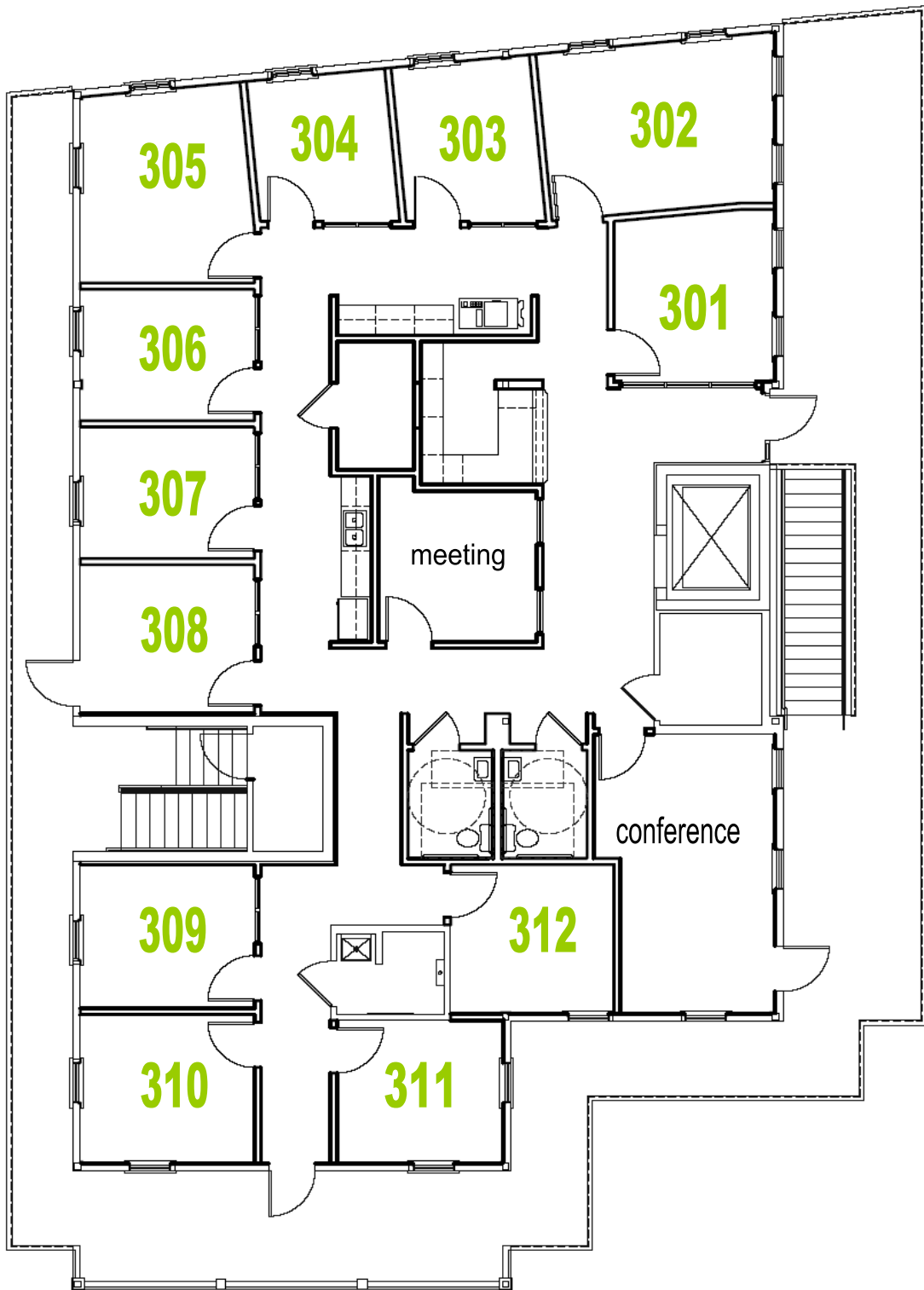
**For Details Contact:**

Loren Ziff 843-270-6000

[lziff@eastrockproperties.com](mailto:lziff@eastrockproperties.com)

\* Information herein deemed accurate but should be verified \*

# Sullivans Island Marsh Winds Executive Suites



3rd Floor Plan

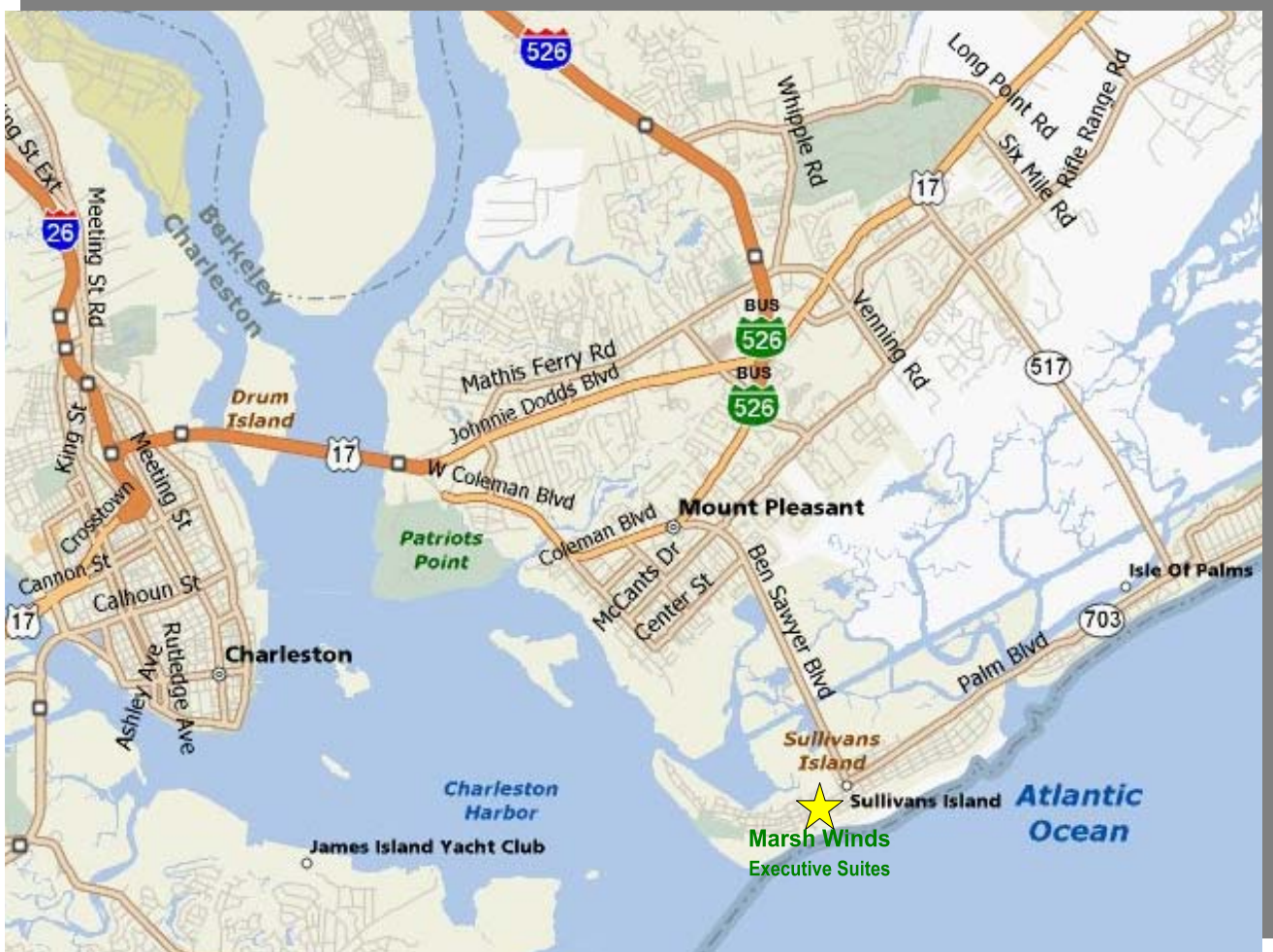


**For Details Contact:**

Loren Ziff 843-270-6000

[lziff@eastrockproperties.com](mailto:lziff@eastrockproperties.com)

# Sullivans Island Marsh Winds Executive Suites



## Directions:

- East on Ben Sawyer Blvd toward Sullivan's Island
- Right on Middle Street
- Marsh Winds Executive Suites on left at 2113 Middle Street



[www.EastRockProperties.com](http://www.EastRockProperties.com)

## For Details Contact:

Loren Ziff 843-270-6000

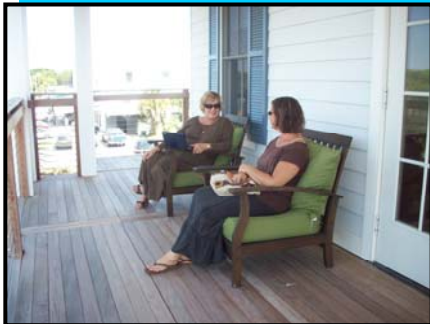
[lziff@eastrockproperties.com](mailto:lziff@eastrockproperties.com)

\* Information herein deemed accurate but should be verified \*

# Sullivans Island Marsh Winds Executive Suites

## Lease Details:

- Furnished Executive Office Suites
- Internet access & telephone system included
- Access to large conference rooms, meeting rooms & kitchen amenities
- Access to office equipment such as color copier, printer, scanner & fax machines
- Onsite parking
- Outdoor porch space
- Elevator access
- 24/7 security system with controlled access
- Flexible lease durations
- Suites may be combined or leased individually
- Executive Suites are priced from \$800 - \$1,000 per month
- Call 843-270-6000 for availability information



**EASTROCK**  
PROPERTIES, LLC

[www.EastRockProperties.com](http://www.EastRockProperties.com)

**For Details Contact:**

Loren Ziff 843-270-6000

[lziff@eastrockproperties.com](mailto:lziff@eastrockproperties.com)

\* Information herein deemed accurate but should be verified \*