

Office Space for Lease

1505 King Street, Suite 114

Charleston, SC

3,547 SF, 1st Floor

Lease Rate:\$26 PSF NNN

Pass-through: \$7.25 PSF



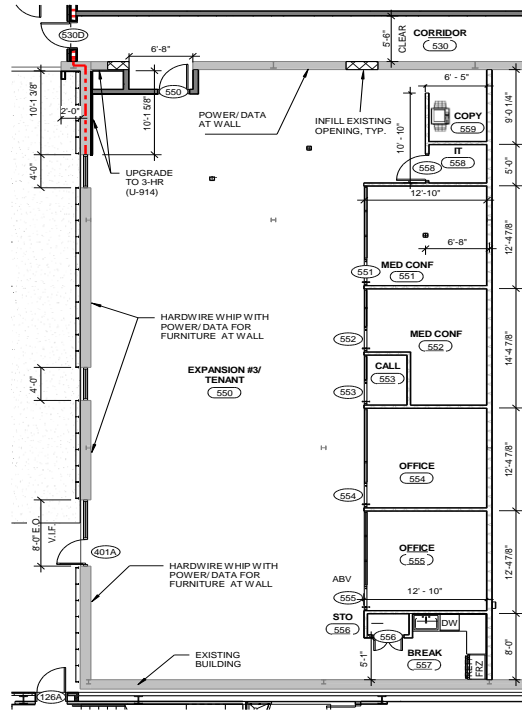
LAST SPACE TO LEASE AT PACIFIC BOX & CRATE!

- Open floor plan with 2 private offices and 2 conference rooms, and breakroom.
- All new construction , breakroom w/stainless steel appliances.
- High ceilings, lots of windows & natural light.
- Co-Tenant with The Workshop (food hall), Edmund's Oast Brewing, BoomTown, PhishLabs and Harbor Accelerator.

**PACIFIC
BOX & CRATE**

Loren Ziff
843-270-6000
lziff@eastrockproperties.com

EASTROCK
PROPERTIES, LLC



1 PARTIAL FIRST FLOOR PLAN
1/8" = 1'-0"

DIXIE KING STREET INVESTORS, LLC
PACIFIC BOX & CRATE, BLDG. 100

LS3P

Area: 10' - 3' x 10' 3'
11/17/2017

